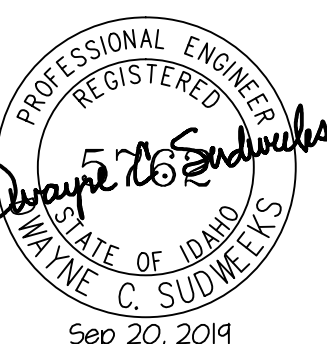


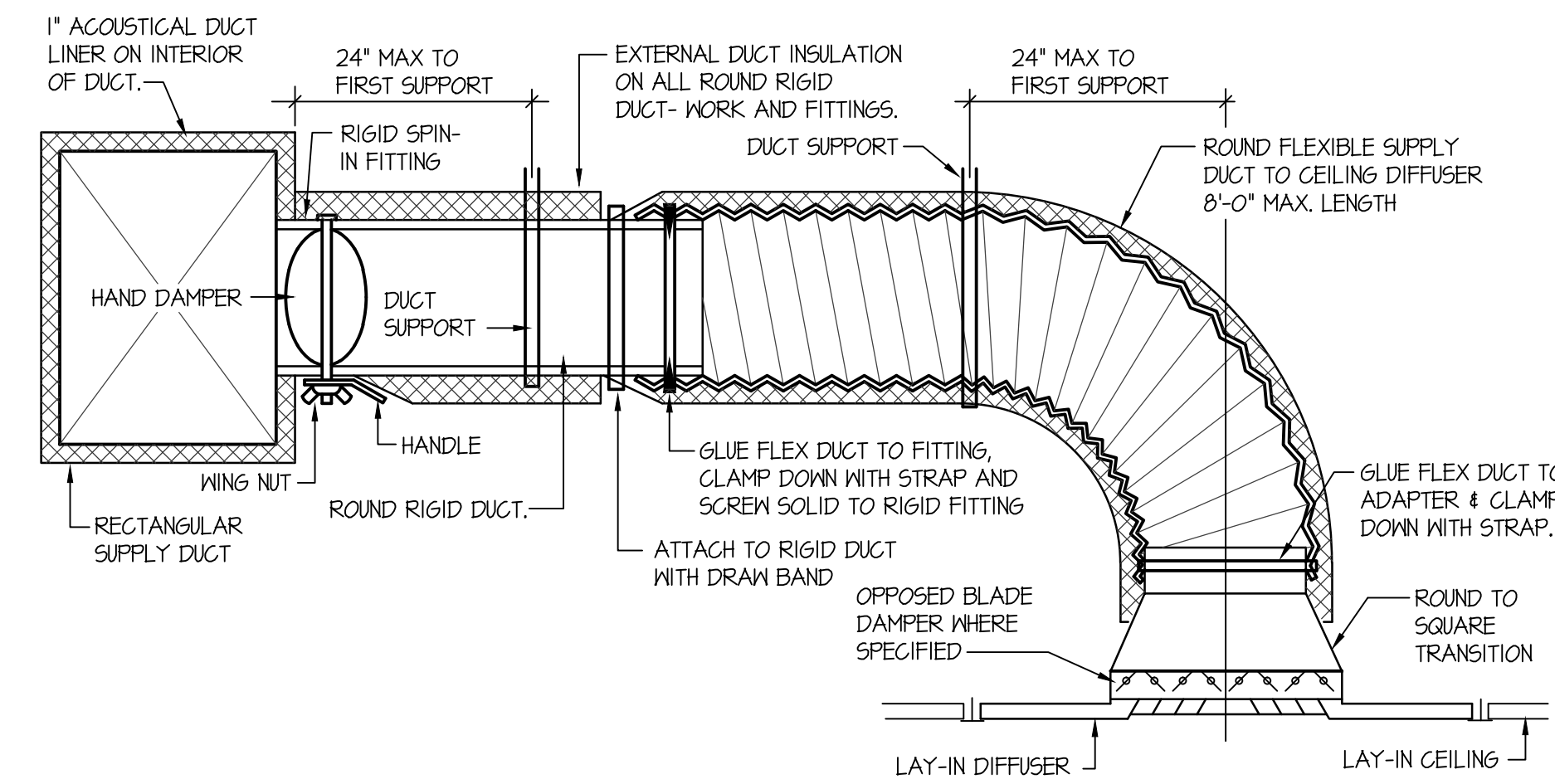


PROJECT:

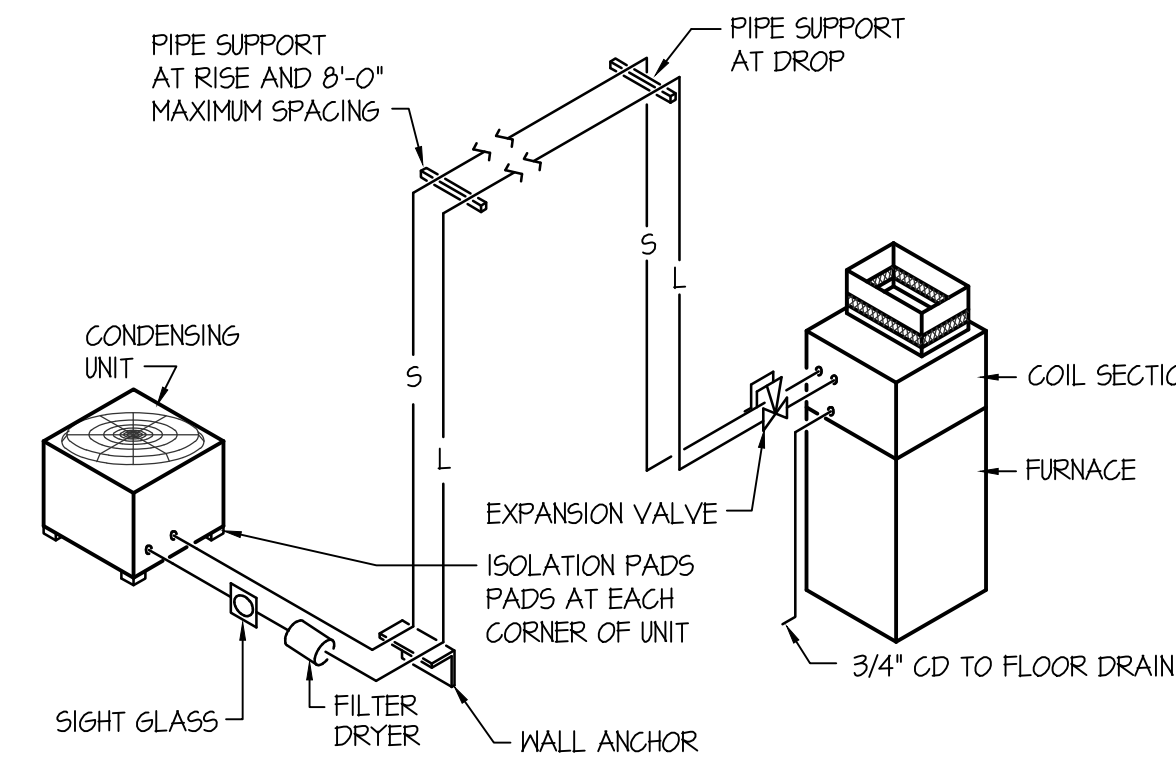


DRWN. BY:	CRD. BY:
SR	DCS
JOB NO.	DATE:
13055	AUG. 2014

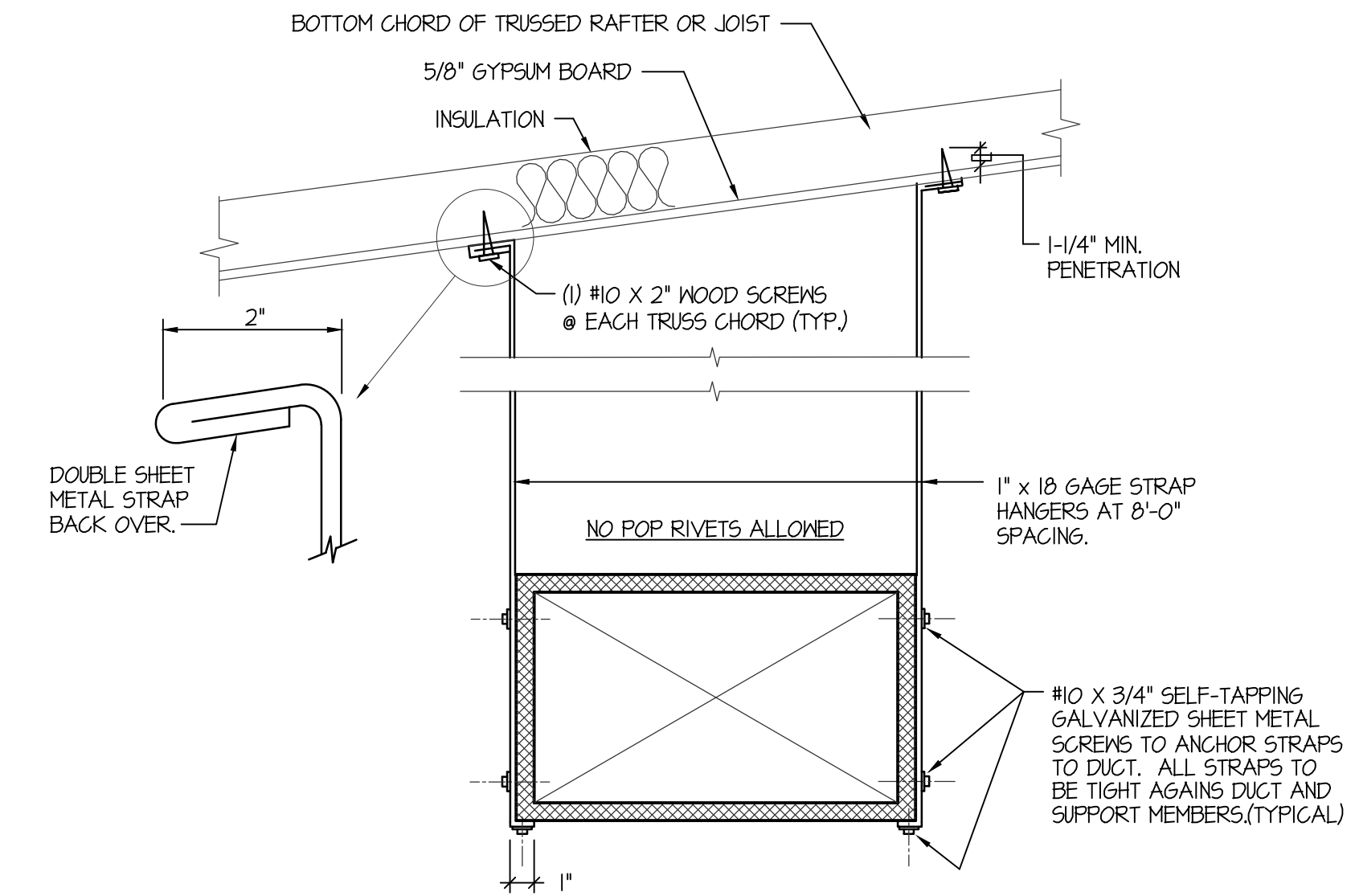
SHEET:  
M-2  
OF: THREE



**CEILING DIFFUSER DETAIL WITH FLEXIBLE DUCT**  
NO SCALE



**REFRIGERANT PIPING DIAGRAM**  
NO SCALE (5 TON AND SMALLER)



**DUCT STRAP HANGER DETAIL**  
NO SCALE

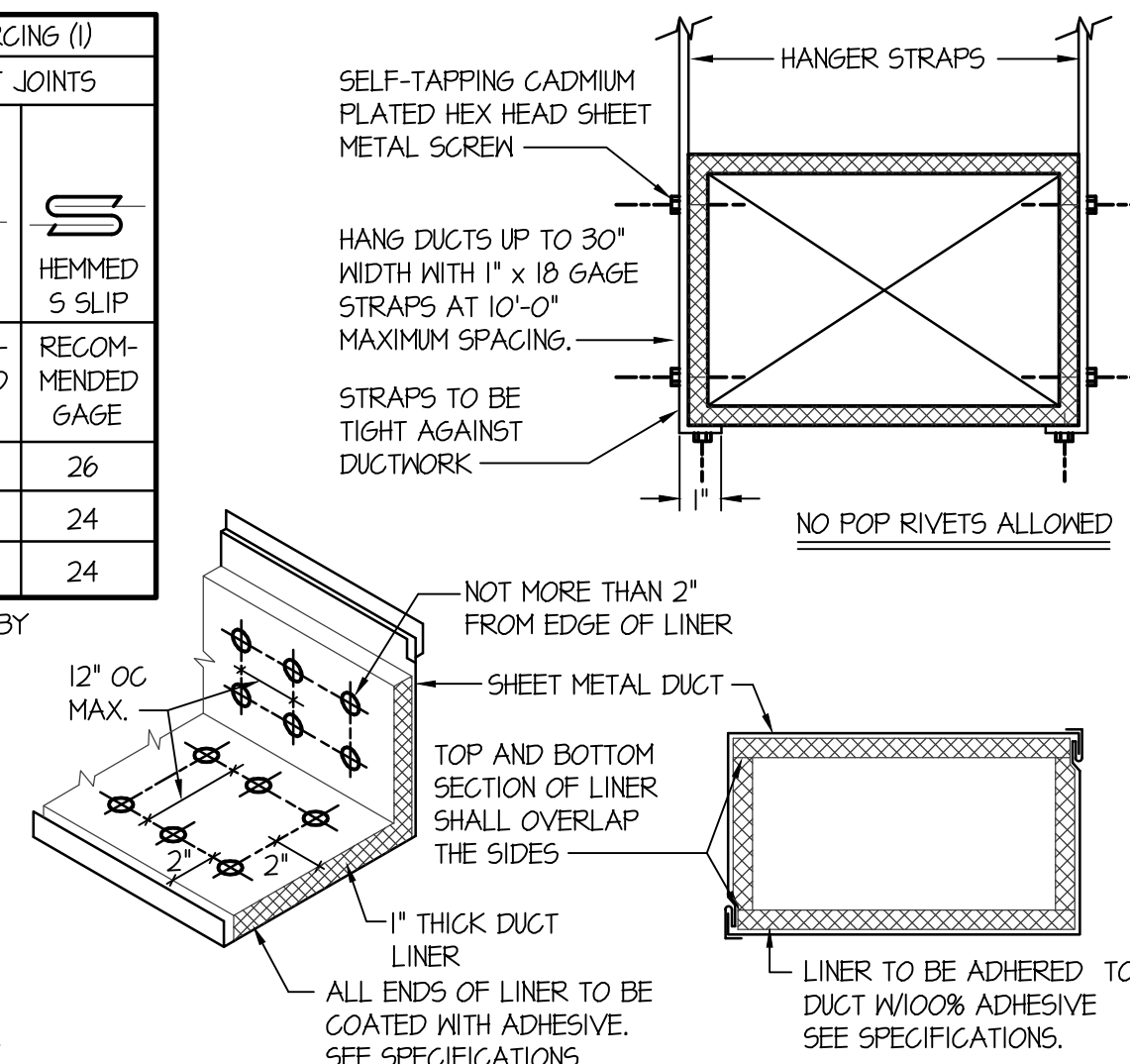
DIMENSION OF LONGEST SIDE, INCHES	SHEET METAL GAGE (ALL FOUR SIDES)	TRANSVERSE REINFORCING (1)	
		MINIMUM REINFORCING ANGLE SIZE AND MAXIMUM LONGITUDINAL SPACING BETWEEN TRANSVERSE JOINTS 4/OR INTERMEDIATE REINFORCING	AT JOINTS
UP THRU 12	26	NONE REQUIRED	26
13 - 18	24	NONE REQUIRED	24
19 - 30	24	1"x1"x1/8" @ 60 IN	24

(1) TRANSVERSE REINFORCING SIZE IS DETERMINED BY DIMENSION OF SIDE TO WHICH ANGLE IS APPLIED.

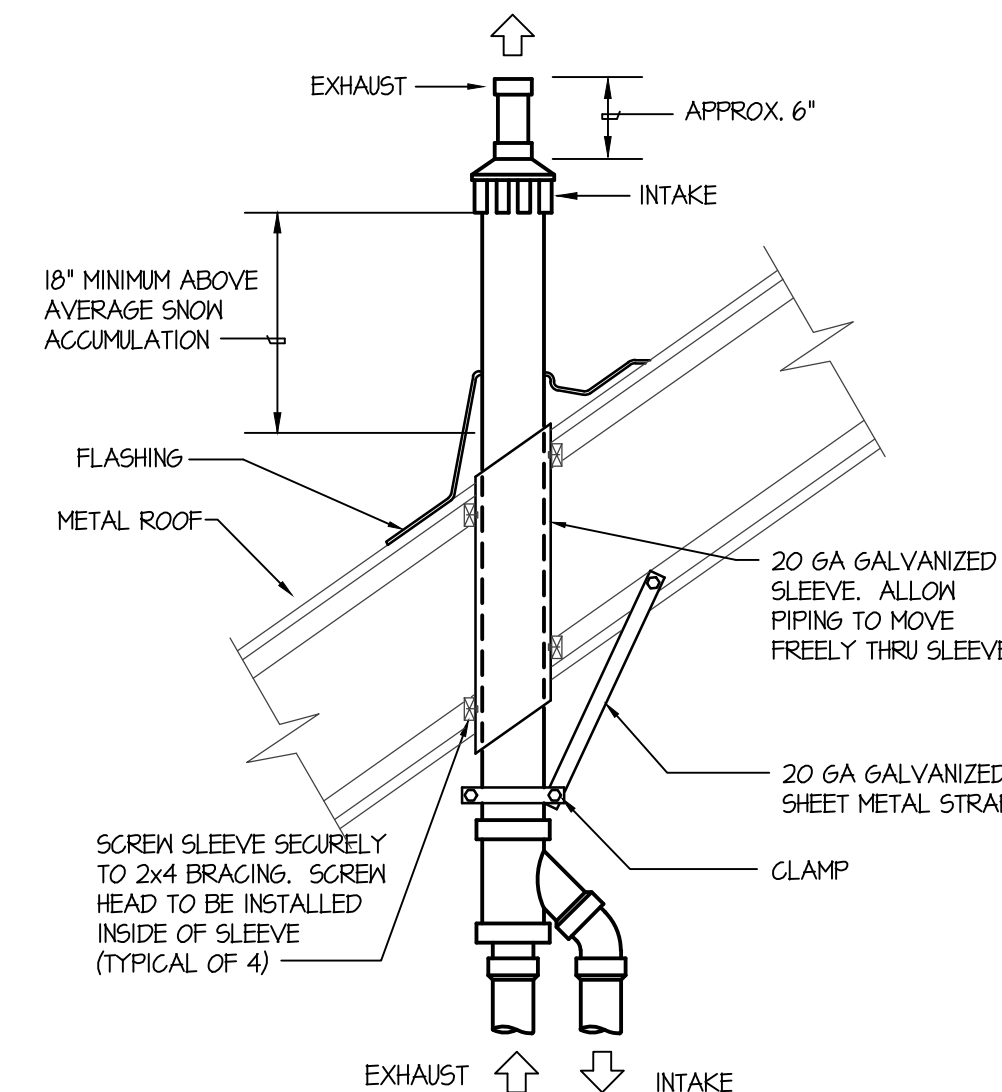
METAL FASTENERS - O-MARK INSULPING, DURO DYNE FASTENERS OR GRIPNAILS.

GRIP NAILS SHALL BE INSTALLED BY GRIPNAIL AIR HAMMER OR BY AUTOMATIC FASTENER EQUIP.

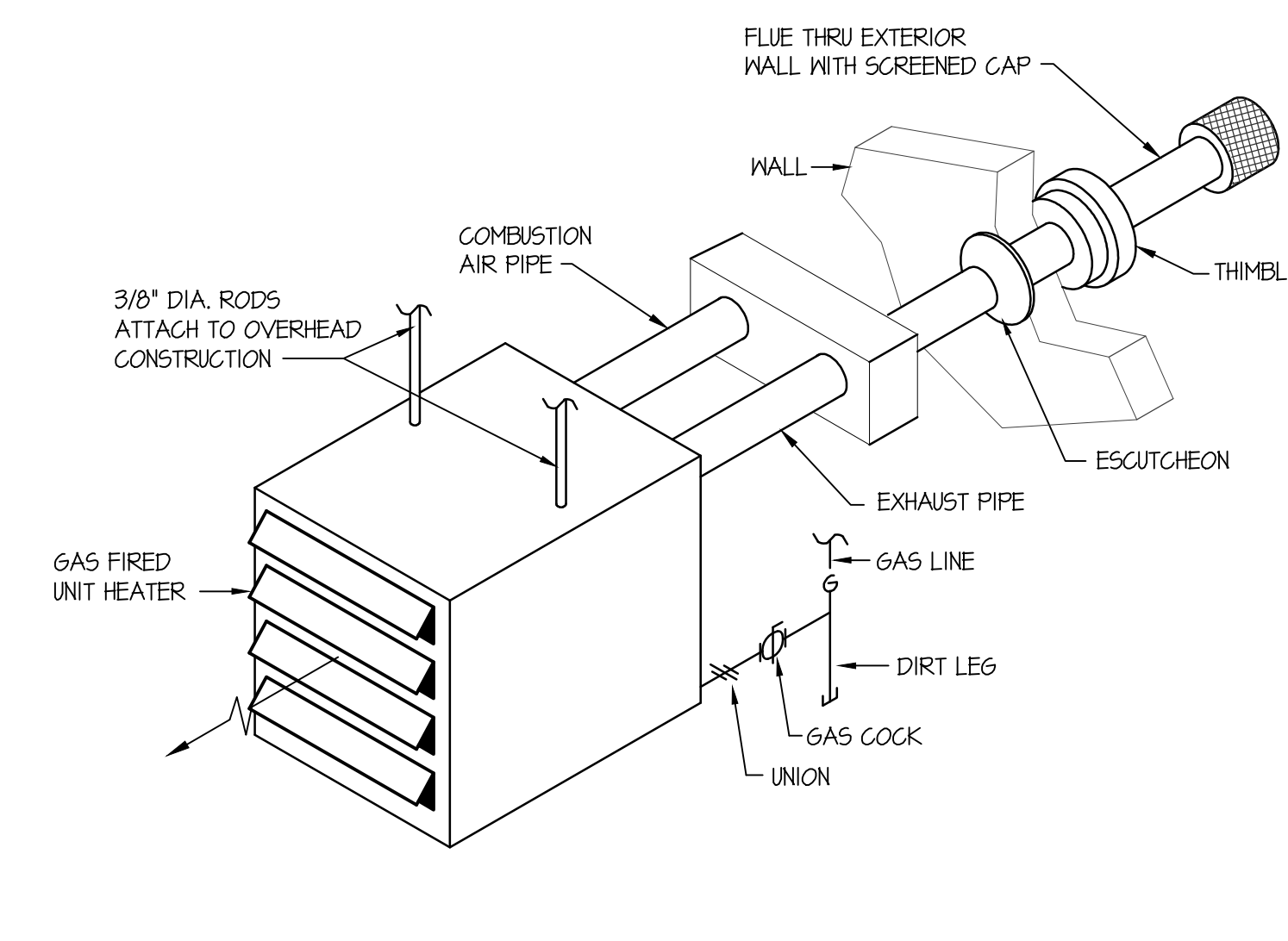
ENDS OF LINER SHALL BE BUTTED FIRMLY TOGETHER.



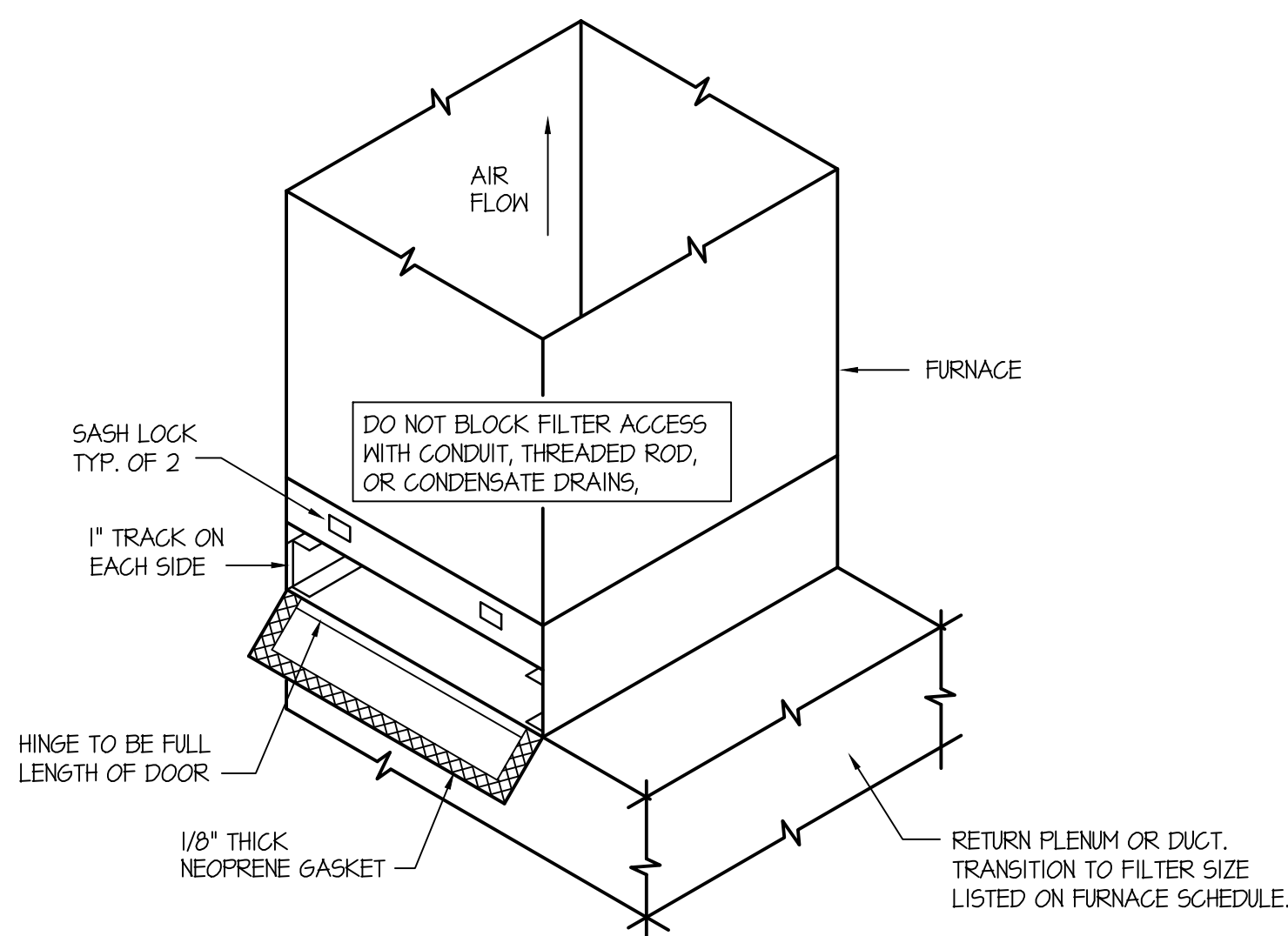
**DUCT CONSTRUCTION AND HANGER DETAIL**  
NO SCALE



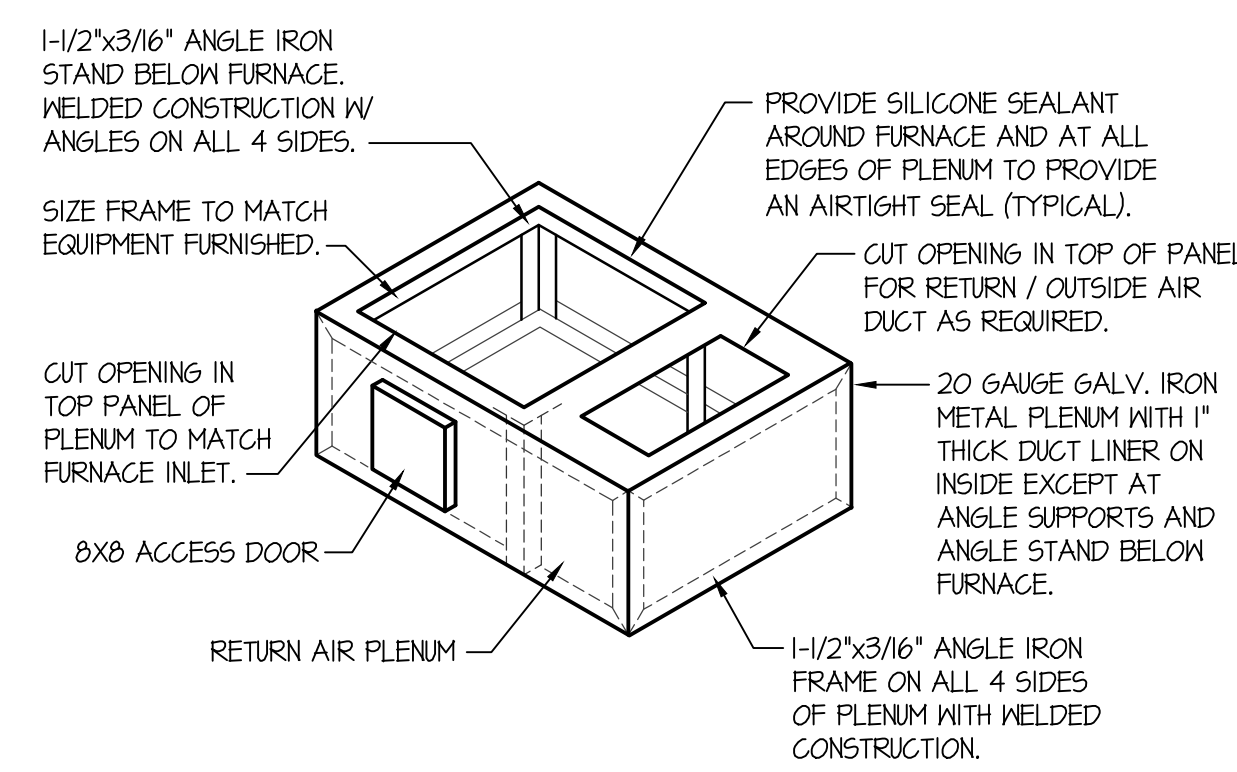
**CONCENTRIC VENT TERMINATION DETAIL**  
NO SCALE



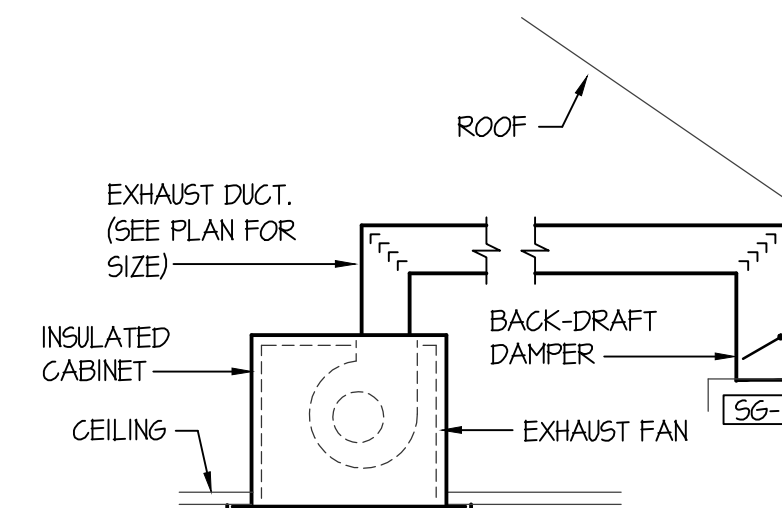
**SEALED COMBUSTION GAS FIRED UNIT HEATER DETAIL**  
NO SCALE



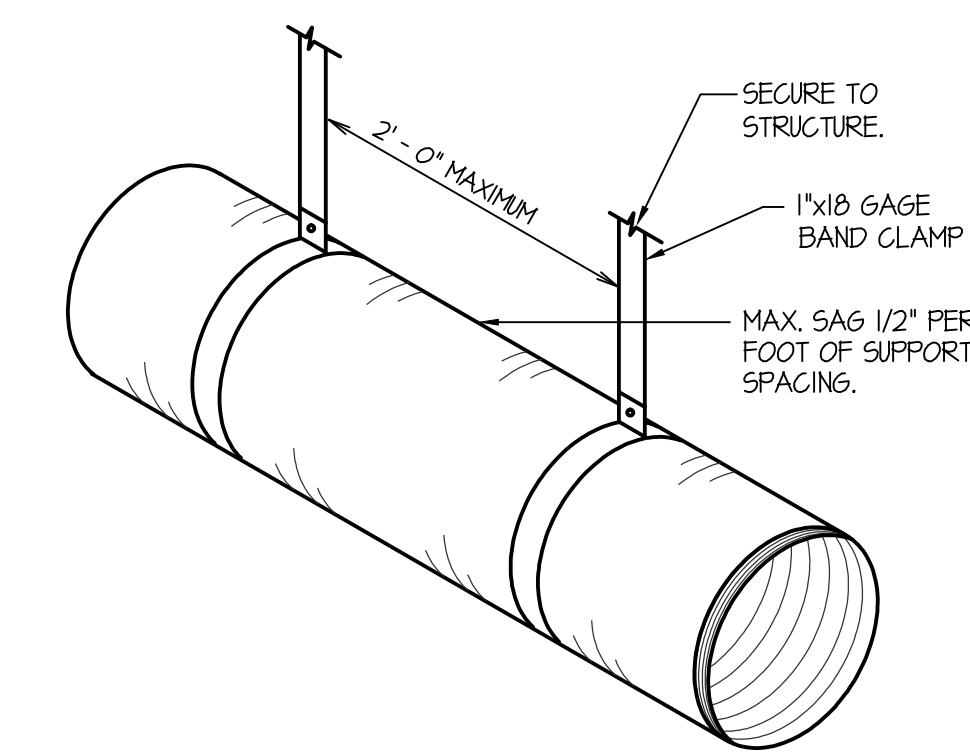
**EXTERNAL FILTER SECTION DETAIL**  
NO SCALE



**RETURN AIR PLENUM DETAIL**  
NO SCALE



**EXHAUST FAN DETAIL**  
NO SCALE



**FLEXIBLE DUCT SUPPORT DETAIL**  
NO SCALE